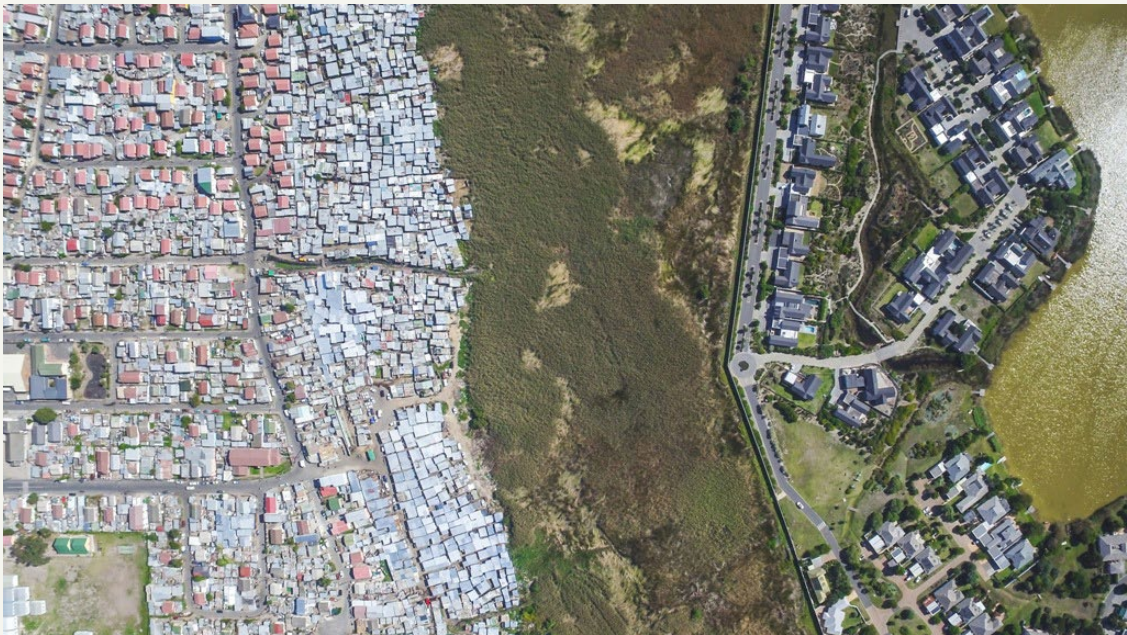




ACEIR
AFRICAN CENTRE OF EXCELLENCE
FOR INEQUALITY RESEARCH



ARUA
African Research
Universities Alliance



ACEIR is a research centre of the African Research Universities Alliance (ARUA). With country partners in eastern, western and southern Africa, ACEIR aims to contribute to deep, multidimensional and interdisciplinary understandings of inequality in each country context, and a continental and global understanding of how inequalities can be overcome.



WEBSITE



EMAIL



FACEBOOK



TWITTER



YOUTUBE

WELCOME TO THE ACEIR NEWS BULLETIN

DECEMBER 2020

2020 was undeniably a tough year for individuals, families, communities and nations across the globe. The repercussions of lockdowns and reduced economic activity have had a devastating impact on gains made against poverty and reduced

inequality.

ACEIR's contribution to understanding and tracking Africa's inequality dynamics has much relevance in this context. In particular, launching our diagnostic reports that reflect inequality trends in different African countries before the arrival of the COVID-19 virus. These publications are now providing a baseline of the inequality status of each country before 2020 and can therefore be used to compare shifts in multidimensional inequality as a result of the pandemic.

In this year-end bulletin we reflect on these and other research from ACEIR's nodes: the release of Ghana's inequality trends report, and the pending release of a similar report for Kenya; on spatial inequality in the context of COVID-19 in South Africa; and on tax and benefit incidence analyses for Kenya and South Africa.

We also share five new working papers which are intended to disseminate findings of ongoing research to researchers, students and the broader academic and policy communities. The working papers span ACEIR's focus on African inequality trends, spatial inequality, and taxation and social spending and include (but are not limited to) economic analysis, economic theory, and policy analysis.

Lastly, find a summary of recent webinars hosted by ACEIR and our partners. With our work involving teams in different countries, the switch to online seminars due to COVID-19 restrictions has been a fortunate development towards bringing the ACEIR nodes and research partners together in real time to share and discuss new research and related insights.

We do not know what 2021 will bring. But what we do know is that we have a committed team who, in spite of a challenging year, have worked together to complete an impressive range of research outputs. Most of these have been supported by the Agence Française de Développement as part of the Research Facility on Inequality funded by the European Union.

We extend our best wishes for a restful and safe holiday, and a healthy, prosperous and impactful 2021.

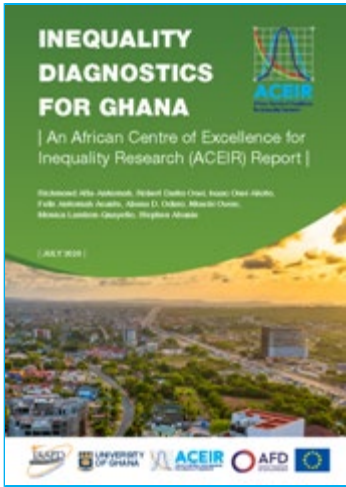
AFRICAN INEQUALITY TRENDS | Inequality diagnostics



Image: ISSER, University of Ghana

Launch of the Inequality Diagnostics for Ghana report

The Ghanaian node of ACEIR has recently released this landmark report of policy-relevant data on inequalities in that country. Produced by researchers based at the [Institute for Statistical, Social and Economic Research, University of Ghana](#), it is the second in ACEIR's series of baseline reports on inequality trends in different African countries. These reports are used to explore the implications of the data analyses for strategies to overcome inequalities with various sectoral stakeholders. Held at the end of November at the University of Ghana, the launch included input from the authors, the country director of the [Agence Française de Développement](#), the secretary-general of [ARUA](#), and ACEIR's director. The event was attended by key stakeholders including academics, government representatives, development practitioners and the media.

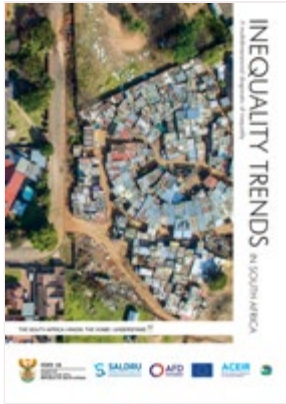


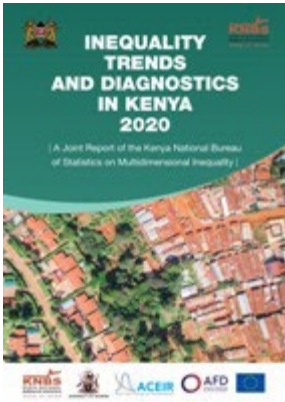
WATCH LAUNCH HIGHLIGHTS

Other reports in the series

The [Inequality trends in South African](#) report was published in November 2019 by Statistics South Africa in partnership with ACEIR, the University of Cape Town, the Agence Française de Développement and the European Union. This was followed by a [multisectoral stakeholder engagement](#) early in the year to apply the report's findings to proposed strategies to reduce inequality in the country.

The *Inequality Trends and Diagnostics in Kenya 2020* is due to be launched in the near future by the Kenya National Bureau of Statistics in partnership with ACEIR; the [School of Economics, University of Nairobi](#); the Agence Française de Développement; and the European Union.





Related working papers

[Exploring the dynamics of micro-level consumption inequality in Ghana](#)

Nkechi S. Owoo, Robert D. Osei, Stephen Afranie

ACEIR working paper series no. 2, October 2020

Although poverty and inequality are related concepts, they are by no means identical and the use of welfare ratios and household per capita expenditures as proxies for both is inadequate as it endorses the usage of similar policy interventions. This paper proposes another measure of inequality at the micro level.

[Understanding the relationship between consumption inequality, inequality of opportunity and education outcomes in Ghana](#)

Monica P. Lambon-Quayefio, Robert D. Osei, Abena D. Oduro, Isaac Osei-Akoto

ACEIR working paper series no. 3, October 2020

Through mediation analysis, the paper aims to isolate the mechanism through which consumption inequality affects education outcomes in Ghana. Using a two-wave nationally representative panel data, the study finds that the contribution of unfair inequality (which is inequality driven by factors beyond the control of individuals) to total consumption inequality in Ghana is not trivial.

[Earnings inequality over the life-course in South Africa](#)

Rocco Zizzamia, Vimal Ranchhod

ACEIR working paper series no. 4, October 2020

There are factors that may drive up inequality in earnings measured over time relative to cross-sectional inequality – for instance, low cross-sectional earnings are likely to be correlated with low wage growth and longer spells of unemployment, thereby compounding inequality. Using South African data, the authors investigate how these dynamic processes act simultaneously but over different time scales to both moderate and exacerbate inequality over time.

AFRICAN INEQUALITY TRENDS | Spatial inequality



Image: Johnny Miller, *Unequal Scenes*, used with permission

Related working papers

[Spatial inequality through the prism of a pandemic: Covid-19 in South Africa](#)

Muna Shifa, Anda David, Murray Leibbrandt

ACEIR working paper series no. 5, October 2020

This paper implements two basic profiling frameworks to make sense of the readiness of South Africa’s people to cope with a COVID-19 lockdown, as well as to access vulnerability to contract the COVID-19 virus. The first proposes a set of indicators of a household’s readiness to cope with a lockdown and then aggregates these into an index of lockdown readiness. The second does the same for COVID vulnerability. These indicators are disaggregated to reflect lockdown readiness and COVID vulnerability at the national, provincial and municipal levels as well for urban/rural areas.

AFRICAN INEQUALITY TRENDS | Tax and benefit incidence analyses

ACEIR’s research in this area entails a series of tax and expenditure benefit incidence exercises in partnership with the [Commitment to Equity \(CEQ\) Institute](#). Studies using the CEQ methodology have been completed in a wide array of low and middle-income countries in all regions of the world and have been shown to be excellent tools for policy engagement on poverty and inequality. The CEQ methodology provides a comprehensive

analysis of how taxes and social spending (such as indirect subsidies and taxes, and education and health expenditures) affect income inequality and poverty in a country.

Related working papers

[Fiscal incidence, inequality and poverty in Kenya: A CEQ assessment](#)

Damiano Kulundu Manda, Reuben Mutegei, Samuel Kipruto, Moses Muriithi, Paul Samoei, Martine Oleche, Germano Mwabu, Stephen D. Younger
ACEIR working paper series no. 6, October 2020

The objective of this paper is to evaluate the effects of fiscal policy actions by the government of Kenya on inequality and poverty in that country. By following the methodology developed by the Commitment to Equity Institute, the authors use national survey and administrative data to construct various income concepts that are used in an analysis of welfare effects of fiscal measures

CLIMATE CHANGE & INEQUALITY | TSITICA



The Transforming Social Inequalities through Inclusive Climate Action project is an innovative multi-disciplinary, cross-country project involving seven universities from Africa and the United Kingdom. Having commenced in July this year, it is a joint project of ACEIR and the [ARUA Centre of Excellence in Climate Development](#), both based at the University of Cape Town. The project team comprises scholars from the University of Ghana, University of Nairobi and the University of Cape Town and, from the United Kingdom, the London School of Economics and Political Science and the universities of Bristol, East Anglia, and Manchester. The research aims to generate evidence on, and knowledge of, how African societies can design and implement climate action to improve sustainable livelihoods and reduce both poverty and inequality.

[READ MORE](#)

TRAINING & CAPACITY BUILDING | Webinars for shared learning

ACEIR's hub-and-node model is designed to facilitate shared learning on the multi-dimensionality of inequality across and within African countries, and how these relate to contemporary issues such as climate change, social inequality, sustainable livelihoods, etc. Webinars are one of the tools used for shared learning and capacity building within the team, and with our research partners as well as within broader policy research networks.

ACEIR | South African inequalities and Piketty's “Capital and Ideology”

By ACEIR researchers Fabio Andres Diaz Pabon, Prof Murray Leibbrandt, Prof Vimal Ranchhod (University of Cape Town) and Prof Mike Savage (London School of Economics and Political Science), 30 November 2020

TSITICA project | Understanding energy systems models
By TSITICA team member Bruno Merven, Energy Systems Research Group, University of Cape Town, 11 December 2020 | [Watch](#)

TSITICA project | An intertwined approach to equity and sustainability in the Anthropocene
By guest speaker Prof. Belinda Reyers, University of Pretoria and Stockholm University, 27 November 2020 | [Watch](#)

TSITICA project | Using mixed methods to analyse the experience of precarity
By TSITICA team member Prof Mike Savage, London School of Economics and Political Science, 16 November 2020 | [Watch](#)

ACEIR | Spatial inequality through the prism of a pandemic: Covid-19 in South Africa
By ACEIR researchers Dr Muna Shifa, Prof Murray Leibbrandt, 19 October 2020

TSITICA project | Assessing climate change response options

By guest speaker Dr Chandni Singh, Indian Institute on Human Settlements, 14 September 2020 | [Watch](#)

ACEIR | Understanding the relationship between economic inequality, inequality of opportunity and education outcomes in Ghana

By ACEIR researchers Dr Monica P. Lambon-Quayefio, Prof Robert D. Osei, Prof Abena D. Oduro, Dr Isaac Osei-Akoto, 11 September 2020

UN Women | Is this time different? COVID-19, inequalities and the prospects for structural transformation

With the participation of ACEIR researcher Prof. Abena D. Oduro, 9 June 2020 | [Watch](#) (use password: 8r!8\$vfh)

EU-AFD Research Facility on Inequality | Exploring the dynamics of micro-level consumption inequality in Ghana

By ACEIR researcher Dr Nkechi S. Owoo, 29 May 2020 | [Watch](#)

EU-AFD Research Facility on Inequality | Earnings inequality over the life-course in South Africa

By ACEIR researcher Rocco Zizzamia, 1 May 2020 | [Watch](#)

FORTHCOMING PUBLICATIONS

Inequality trends and diagnostics in Kenya

A joint report of the Kenya National Bureau of Statistics, the University of Nairobi, Agence Française de Développement and ACEIR.

IN THE NEWS | Ghanaian inequalities



[Stakeholders call for enhanced access to social amenities to reduce poverty](#)

CitiTV, 2 December 2020

[ACEIR launches report on inequality diagnostics for Ghana](#)

Ghana News Agency, 28 November 2020

[Inequality Diagnostics for Ghana report launched in Accra](#)

Ghana Today, 30 November 2020

[Inclusive growth policies and strategies needed to bridge inequalities in Ghana - report](#)

Graphic Online, 2 December 2020

[Inequality diagnostics report on Ghana launched](#)

Ghana Web, 30 November 2020

[ACEIR launches report on inequality diagnostics for Ghana](#)

News Ghana (online), 28 November 2020

[ACEIR launches report on inequality diagnostics for Ghana](#)

La Fédération Atlantique des Agences de Presse Africaines (FAAPA), 28 November 2020

[Inequality diagnostics report on Ghana launched](#)

MyInfoGh, 1 December 2020

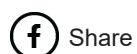
[ISSER launches inequality diagnostics report for Ghana](#)

Vaultz News, 30 November 2020

HELP US SPREAD THE WORD



We are encouraging our readers across the continent and beyond to share ACEIR news with colleagues and associates. If they want to stay connected, they also can [sign up](#) for future news from the Centre.



Share



Tweet



Forward

Copyright © 2020 African Centre of Excellence for Inequality Research, All rights reserved.

Want to change how you receive these emails?
You can [update your preferences](#) or [unsubscribe from this list](#).

